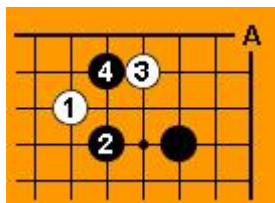
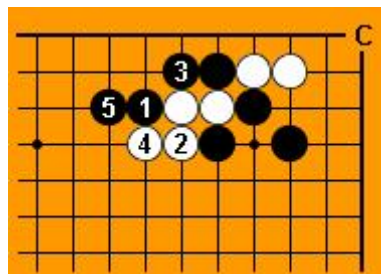
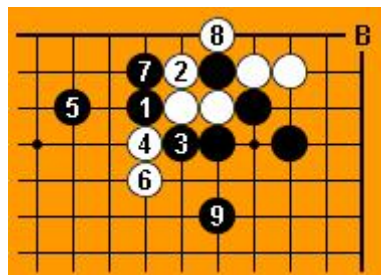
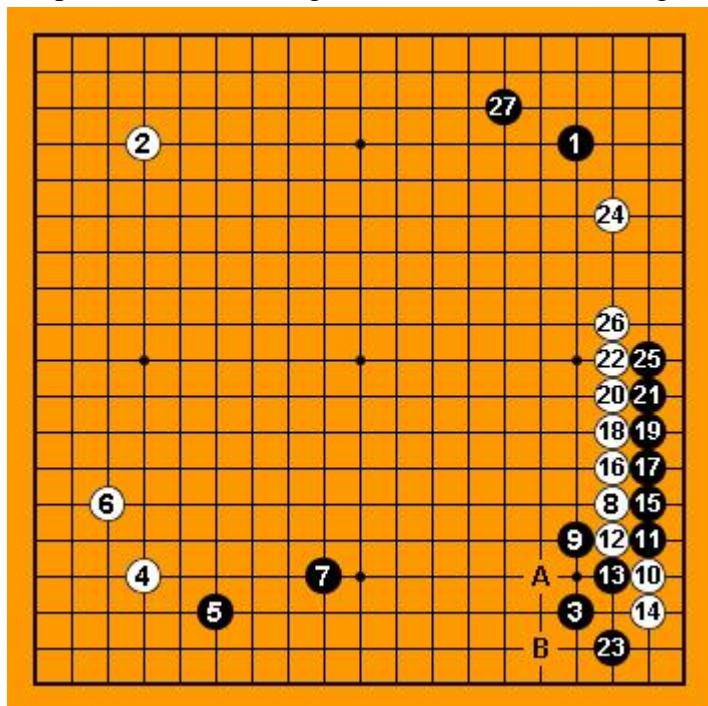


Korean trick move #2



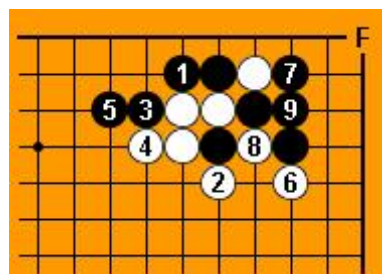
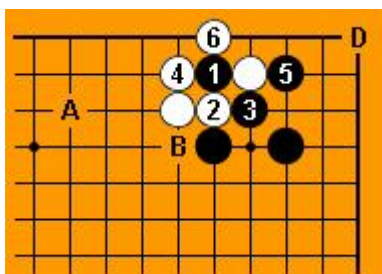
This trick move was first played by Kim Myeungwan, 6-dan (“mymy” on KGS) against Song Taekun, 4-dan in 2003. The punishment is not so great and it is strange that it was never used on pro scene after that game. We will see the real game first:



White (Song) won the game by resignation. Black’s territory is not so large and the peeps at A and B are painful for them. I think, that this result is slightly better for White. Instead of taking the corner, Black must use a powerful tesuji (Black 1 on Diagram B). The position would be complicated, but promising for Black. The fight on Diagram C would be hopeless for White.

It seems, that the extension (White 14) in Kim vs Song game was wrong for White, but Black did not used his chance.

What is the right answer for White? We will try to find something better.



White can capture the stone (Diagram D), but the squeeze would be painful for them. Later Black can play at A or B, according to the situation. The result is clearly bad for White.

White 4 on Diagram E is the best answer.

Diagram F: Black’s corner is large, but White’s wall is really strong. White’s position is comfortable, but it looks playable for both sides.

I believe, that we can see this pattern in pro games in near future. Feel free to use it!